

OLYMPUS[®]

Your Vision, Our Future

EVIS EXERA III

EVIS EXERA III GASTROINTESTINAL VIDEOSCOPE

GIF-HQ190

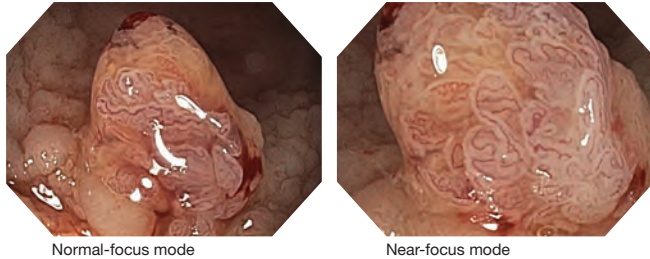
Amazing image quality for upper GI endoscopy





Dual Focus

Dual Focus, a unique Olympus optical innovation, allows the user to select from two focus settings. With the simple push of a scope button, the desired depth of field for observation can be optimized to either the near field or normal field.

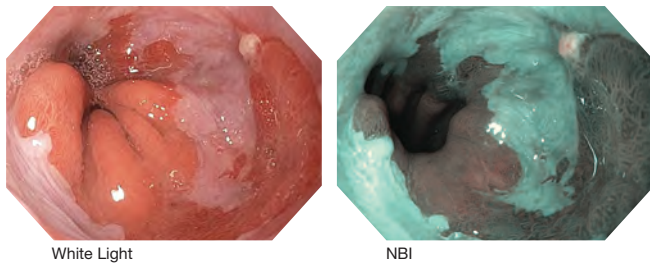


Enhanced Image Quality

Improved optics, a brighter image, increased contrast, reduced noise, and reduced halation are the result of a new CCD available in the EVIS EXERA III, providing superior image quality even during electronic zoom.

NBI (Narrow Band Imaging)

NBI in EVIS EXERA III 190 Series scopes provides twice the viewable distance of EVIS EXERA II 180 Series scopes and is significantly brighter. HD NBI provides contrast, which may aid in the interpretation of mucosal morphology, vascular patterns, and blood vessel appearance in patients with Barrett's esophagus.



Water Jet

EVIS EXERA III 190 Series scopes' forward water jet function is standard on all routine gastroscopes.



Waterproof One-touch Connector

A new connector design minimizes the effort required for setup prior to and in between cases. In addition, it is fully submersible and eliminates the need for a water-resistant cap and the associated risk of an expensive repair due to accidental immersion.



| | | |
|-------------------|-------------------------------|--------------------------|
| Optical System | Field of view | Normal 140° Near 140° |
| | Direction of view | Forward viewing |
| | Depth of field | Normal 5-100 mm |
| | | Near 2-6 mm |
| Insertion Section | Distal end outer diameter | 9.9 mm |
| | Distal end enlarged | |
| | | |
| | Insertion tube outer diameter | 9.9 mm |
| | Working length | 1030 mm |

| | | |
|------------------------------|--|----------------------------|
| Instrument Channel | Channel inner diameter | 2.8 mm |
| | Minimum visible distance | 3.0 mm from the distal end |
| Bending Section | Direction from which endotherapy accessories enter and exit the endoscopic image | |
| | | Up 210° |
| | | Down 90° |
| | | Right 100° Left 100° |
| Total Length | 1350 mm | |
| Compatible EVIS EXERA System | Video System Center OLYMPUS CV-190 Xenon Light Source OLYMPUS CLV-190 | |

Dual Focus images courtesy of Roy Soetikno, MD.
NBI images courtesy of Horst Neuhaus, MD.

Specifications, design, and accessories are subject to change without any notice or obligation on the part of the manufacturer. Olympus is a registered trademark of Olympus Corporation, Olympus America Inc., and/or their affiliates.